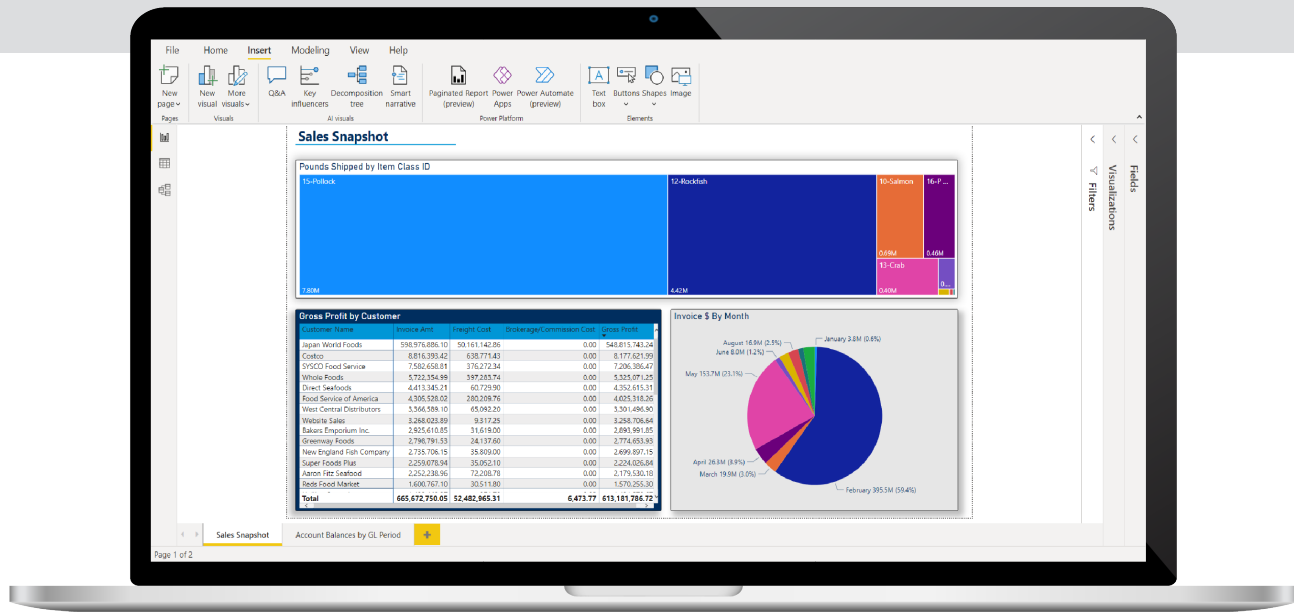


# DATA WAREHOUSE

*NorthScope's Data Warehouse is an analytical tool built to provide valuable business insights, thanks to its ability to consolidate and simplify information, giving you complete visibility into your business at the click of a button.*

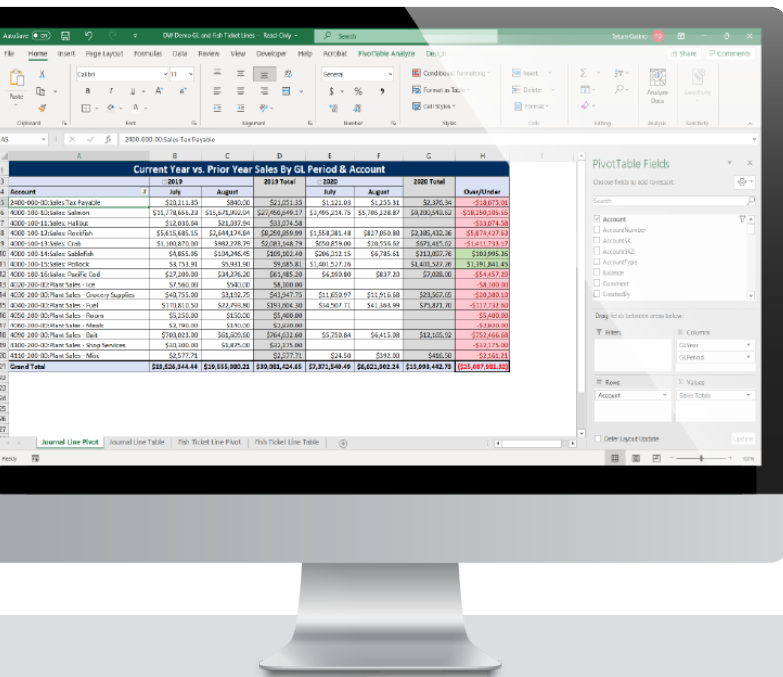


**IF YOU'RE LIKE MANY FOOD MANUFACTURERS, YOU'RE PROBABLY TIRED OF:**

- ⊗ Being forced to assemble data from multiple systems
- ⊗ Inaccurate information showing up on different reports
- ⊗ Information availability being delayed
- ⊗ Manually consolidating information across companies or divisions
- ⊗ Not having direct access to the detailed/raw data in your system

**LET US DO THE HEAVY LIFTING SO YOU CAN FOCUS ON ANALYSIS AND DECISION MAKING.**

NorthScope's Data Warehouse was developed to relieve you of stress by gathering and updating your data automatically so you can use your time more strategically. With NorthScope's Data Warehouse you can get access to summary or detailed data from one company, multiple divisions, or even include data from outside NorthScope for a single source of information.



## THE POWER IS IN YOUR HANDS.

With access to your information in a simplified and easy-to-use format you can connect to it using familiar tools such as Excel, Power BI or many other report writing tools.

*“The data warehouse gives users the ability to analyze their business quickly and easily, using tools they are already familiar with. With this tool, the days of waiting hours or days for someone else to get you the answers you need are over.” - Tom Williams, Managing Partner*

## DECIDE WHAT'S MEANINGFUL TO YOU TO MAKE INFORMED BUSINESS DECISIONS.

Your power begins with deciding what data is meaningful to you and pertinent to make informed business decisions, and we make it happen. If the data exists and is tracked in NorthScope then it can be included in your Data Warehouse – we can even include data from non-NorthScope sources.

Examples of the data you can access using NorthScope's Data Warehouse include:

- Individual or consolidated financial statements for each of your companies regardless of the server they live on.
- How much you spend with any vendor over any time period.
- How much your company owes to fishermen across all plants.
- A breakdown of your sales activities across the company by any data point (i.e. salesperson, item, customer, etc.).
- And more!

